

**AM
STEREO**

KRACO®

OWNER'S MANUAL



designer series
Model ETR-1084

**Auto-Reverse Cassette Player
with Electronic Tuning and
Automatic Music Search (AMS)**

INTRODUCTION

From the unique Automatic Music Search to the Illuminated Graphics, Kraco has refined your new car stereo to be easily operated and installed. To become more familiar with these features and others, please be sure to read this Owner's Manual beginning.

Thank you.

Owner's Record

Model Number: _____ ETR-1084 _____

Serial Number: _____

Purchase Date: _____

Purchased From: _____

Section 1

Table of Contents

INSTALLATION	Page
Control Shaft Adjustment	4
Indash Installation	4
Electrical Connections	6
Speaker Wiring	6

Control Shaft Adjustment (Figure 1)

Measure the center-to-center hole spacing for radio in your dashboard. If the spacing is close to 148mm ($5\frac{3}{16}$ "), the factory preset spacing on the Dashmaster will probably fit without adjustment. (If the shaft holes are large enough, small variations in shaft spacing will be accommodated.) If your dash shaft holes do not align with the factory preset spacing, follow the steps below for adjustment.

1. Loosen nuts (a) and washers (b) so shaft locking washers (c) can be moved easily.
2. Move the control shafts to desired location. If positions 3 and 4 are desired, the large tab must point down.
3. Align locking washers with holes and tighten nuts (a) firmly.

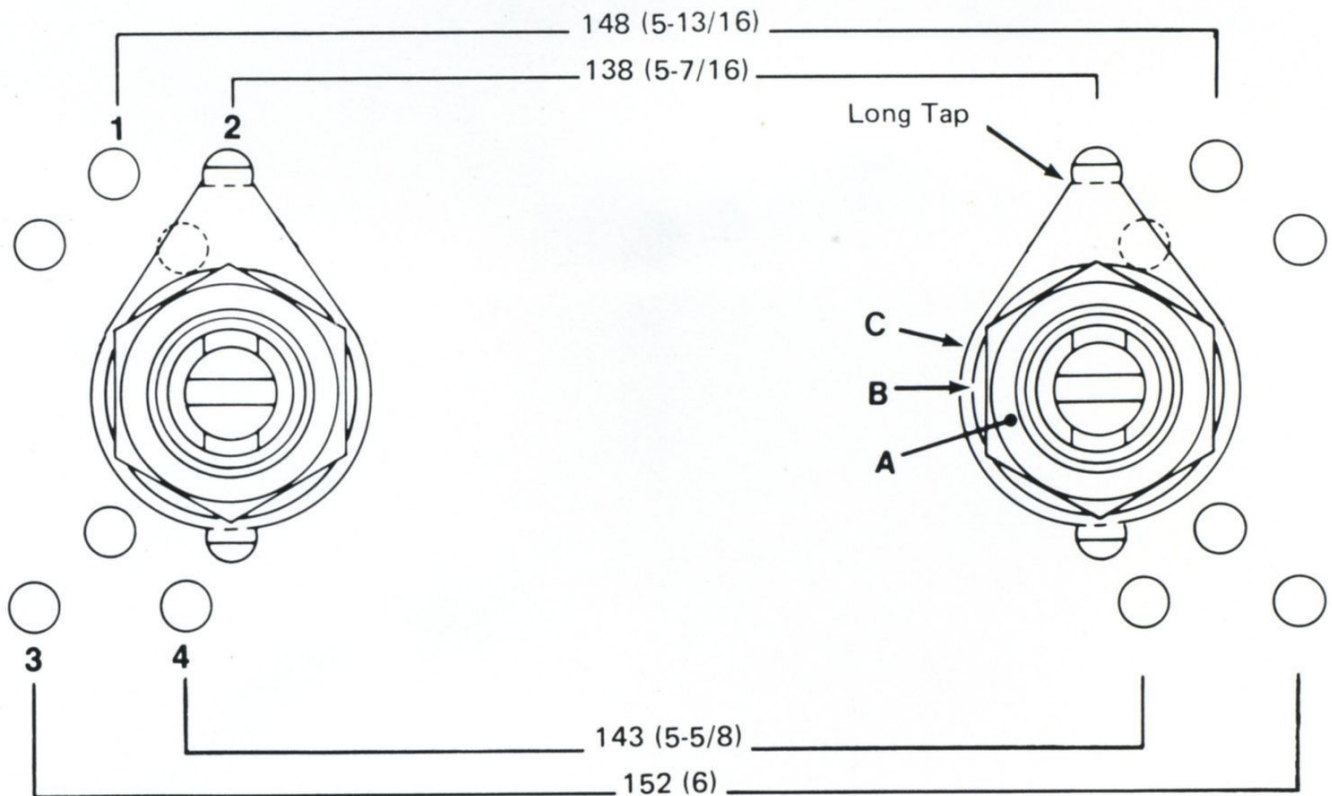


Figure 1

Installation Indash (Figure 2)

1. Remove dummy faceplate or existing radio from dash to expose radio mounting holes. If the existing radio has a front support bracket attached, remove it for possible reuse.
2. Install one hex shaft nut (j) and one washer (h) on each control shaft of your new Dashmaster.
3. Attach the rear support strap (n) to the rear of Dashmaster with master (k), lock washer (l) and hex nut (m).
4. Connect wiring harness (r) to matching plug of Dashmaster. Route the red and pink fused wires of harness to fuse box. Connect the red wire to a fuse which is marked either "RADIO," "IGN," "FUSED" or "ACC, FUSED." Connect the pink wire to a fuse which is "HOT" with or without the ignition key. Route remaining wires to an area which will be accessible once the Dashmaster is installed.